

Hawai'i Ocean Resources Management Plan Update

Coordinated Working Group
Status Report
October 3, 2019

Agenda

- Project overview
- Community engagement to date
 - Statewide Information Sharing Sessions
 - On-line survey
 - TEK interviews
 - HCPO
- Plan partner engagement to date
 - Interviews
- Next Steps



Update Overview

2020 Update



Incorporate Traditional Ecological knowledge



Improve Utility



Identify top focus areas among many competing priorities

Considerations for selection of focus areas



Is it a statewide issue?



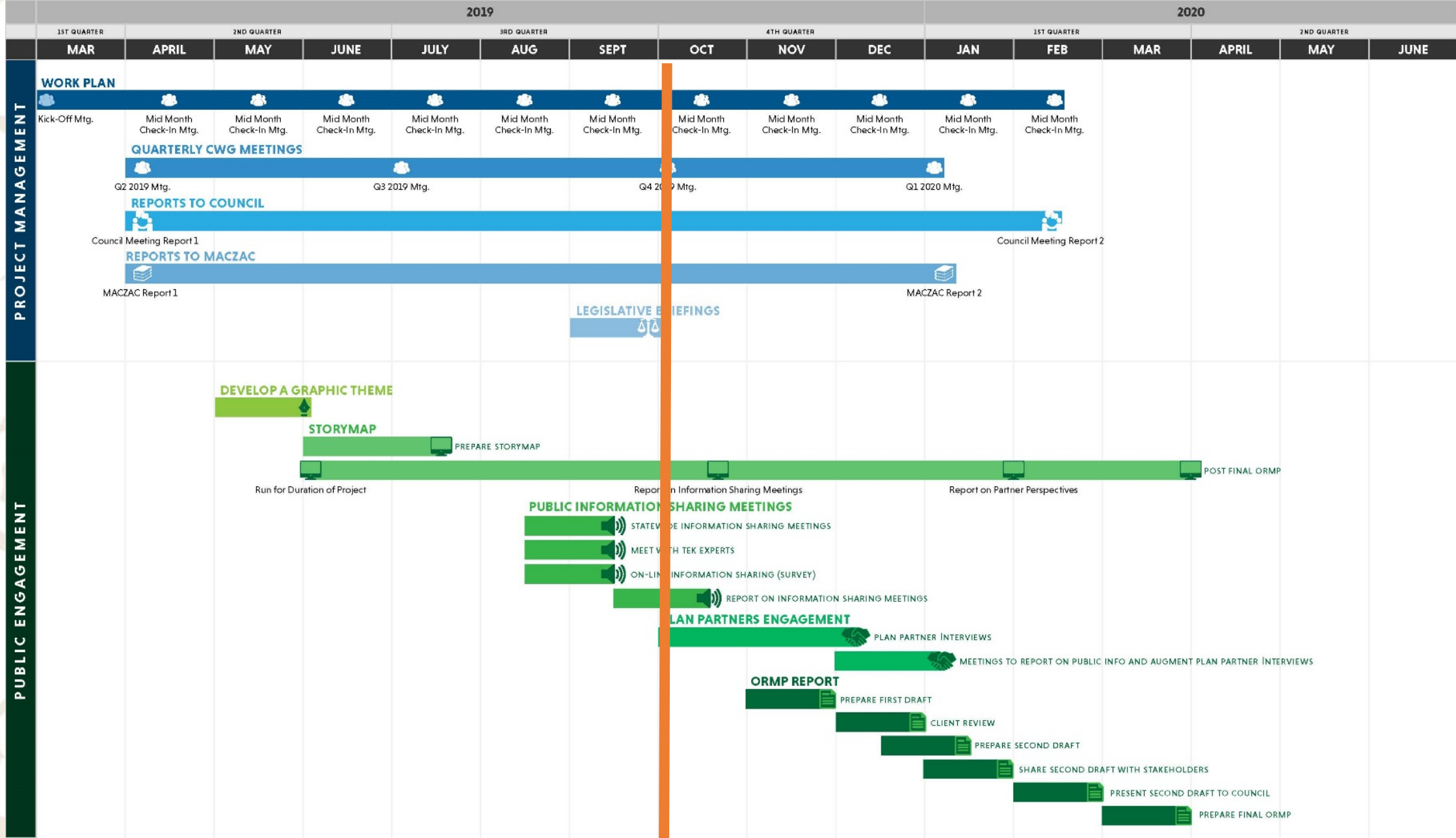
Is there a management gap?



Is it distinct from or complementary to other efforts?



Is it a multi-agency collaborative effort?



A photograph of a public engagement meeting. A woman in a green shirt stands at the front, presenting to a group of people seated in folding chairs. A presentation board is visible in the background. The room has a door with an 'EXIT' sign and a fire extinguisher on the wall. The text 'Public Engagement' is overlaid in white on the image.

Public Engagement



UPDATING THE HAWAII OCEAN RESOURCES MANAGEMENT PLAN

The State of Hawai‘i Office of Planning Coastal Zone Management Program invites you to participate in Information Sharing Sessions across the Islands.

The purpose of these Information Sharing Sessions is to seek public input and help to inform the plan’s next update. The meetings will provide opportunities for attendees to share their perspectives on coastal issues, both local and statewide. All meetings will present the same information and planning participation opportunities.

INFORMATION SHARING SESSIONS

WEEK 1

O‘ahu | August 19th 2019 | 5:30 - 7:30 PM

Washington Middle School Cafeteria
1633 S King St, Honolulu, HI 96826

O‘ahu | August 20th 2019 | 5:30 - 7:30 PM

Department of Hawaiian Home Lands, Hale Pono‘i
91-5420 Kapolei Pkwy, Kapolei, HI 96707

Maui | August 21st 2019 | 5:30 - 7:30 PM

Kahului Community Center
275 Uhu St, Kahului, HI 96732

Lāna‘i | August 22nd 2019 | 5:30 - 7:30 PM

ILWU (International Longshore Warehouse Union)
840 ‘Ilima Ave, Lāna‘i City, HI 96763

WEEK 2

Moloka‘i | August 26th 2019 | 5:30 - 7:30 PM

Mitchell Pau‘ole Community Center
90 ‘Ainoa St, Kaunakakai, HI 96748

Kaua‘i | August 27th 2019 | 5:00 - 7:00 PM

Kaua‘i War Memorial Convention Hall
4191 Hardy St, Lihue, HI 96766

Hawai‘i Island | August 28th 2019 | 5:30 - 7:30 PM

Hawai‘i Ocean Science and Technology Park
(HOST Park) Hale ‘Iako Building
73-970 Makako Bay Dr, Kailua-Kona, HI 96740

Hawai‘i Island | August 29th 2019 | 4:30 - 6:30 PM

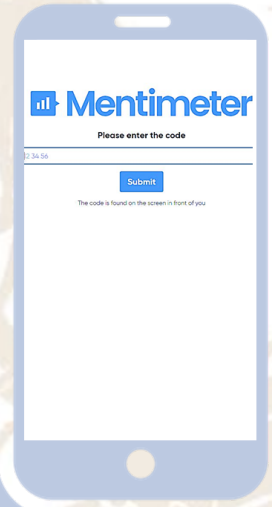
Aupuni Center
101 Pauahi St #5, Hilo, HI 96720



Information Sharing Sessions



Information Sharing Sessions



Information Sharing Sessions

Most frequent comment theme:

Concern about government's ability to manage resources

Information Sharing Sessions

Most frequently mentioned Management
Priorities:

Watershed Management, Appropriate
Coastal Development, and Coastal Hazards

Information Sharing Sessions

Emerging Issues:

chemical contaminants

wastewater facilities (of all types)

plastics and microdebris

overuse of resources

food security

holistic resource management perspective

economic diversification

On-line Survey



EXIT ^

Hawai'i Ocean Resources Management Plan Update Public Survey

Aloha!

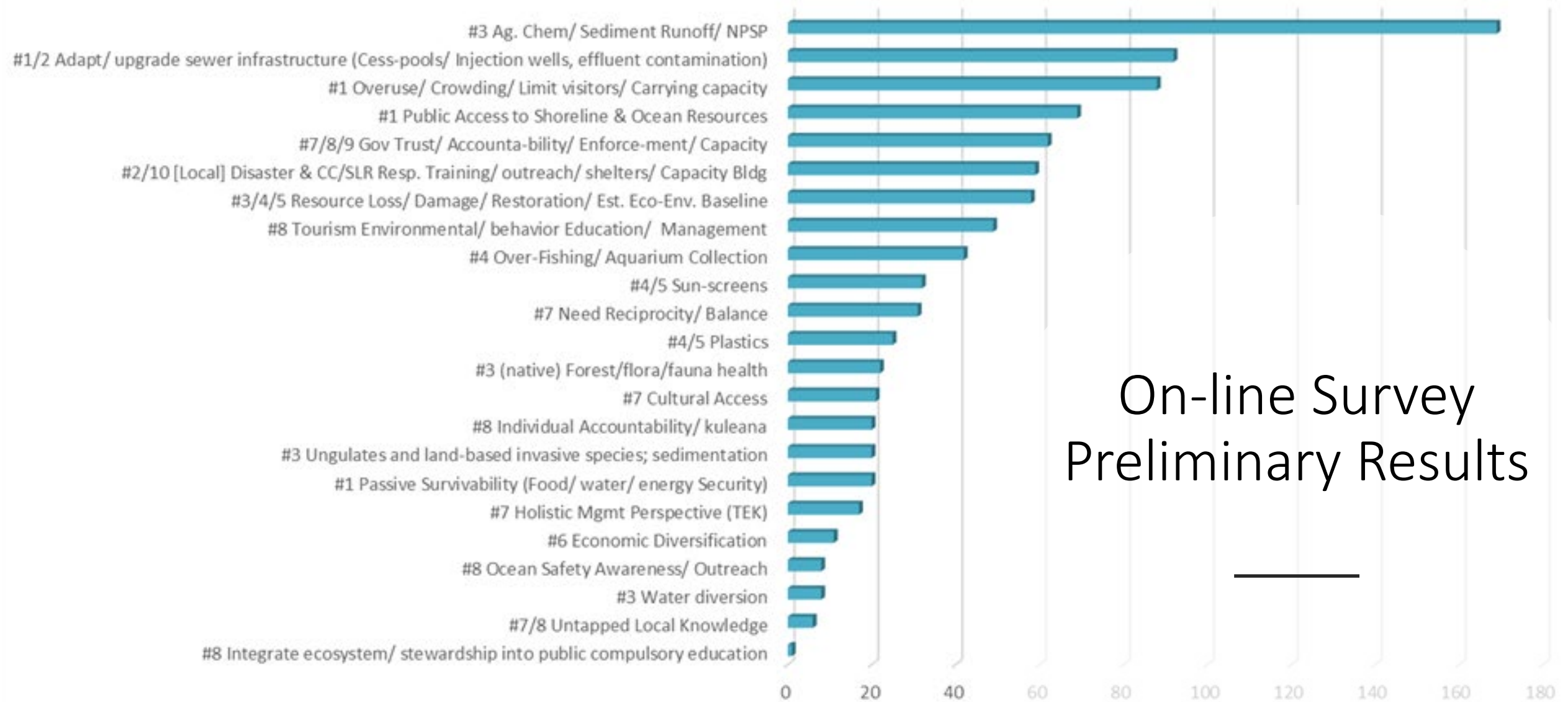
Mahalo for taking the time to participate in this public survey. The purpose of this survey is to help inform the next update of Hawai'i's Ocean Resources Management Plan (ORMP). The ORMP is a strategy document for encouraging agency collaboration on coastal and ocean issues in Hawai'i.

0 of 23 answered

^

▼

Themes: Online Survey



Traditional Ecological Knowledge Interviews



TEK: Ancient Wisdom-Future Best Practices



How do you integrate TEK with your work; and, how can this audience use what you do to integrate TEK in their work?

Does acknowledgement of TEK change the planning process?
How can TEK inform planning documents?

How can TEK shape our understanding of climate change and our efforts toward greater resiliency to the effects of climate change?



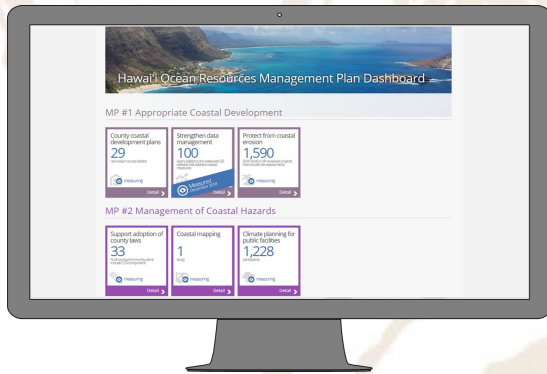
Plan Partner Engagement

City and County of Honolulu,
Department of Planning and Permitting

Plan Partner Interviews



ORMP Process/Function



Dashboard & Metrics



New issues/efforts

Plan Partner Interviews

Observed themes:

Advancing climate change and sea level rise initiatives

Executive-level mandates

Need for collaboration

A scenic view of a tropical coastline. The foreground shows a deep blue body of water with a small white sailboat. The middle ground is dominated by steep, lush green mountains. The background features a bright blue sky with scattered white clouds. A thin white vertical line is positioned to the left of the text.

Next Steps

Next Step in Drafting the Update...



Is it a statewide issue?



Is there a management gap?



Is it distinct from or complementary to other efforts?



Is it a multi-agency collaborative effort?

Mahalo!

Any Additional Questions?